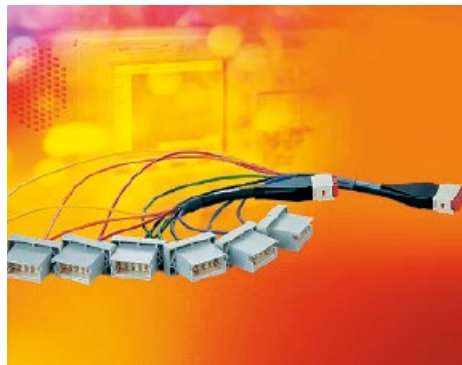




Mini Coax cable assemblies and accessories

Page

Mini Coax cable assemblies – general information	08.02
Assemblies with standard modules	08.04
Assemblies with single-row modules and with heavy duty hoods/housings . . .	08.06
Accessories	08.07



The Mini Coax product range also includes various cable assemblies and accessories, which provide customers with flexible application options.

The Mini Coax cable connector is available as plug and socket and is crimped to a coaxial cable that can be individually assembled with RF-cable connectors (SMA, SMB, N-type ...). While delivering high RF transmission performance, the moulded Mini Coax cable assemblies provide robust connections. The various angle mould types meet different cable routing requirements according to the available space.

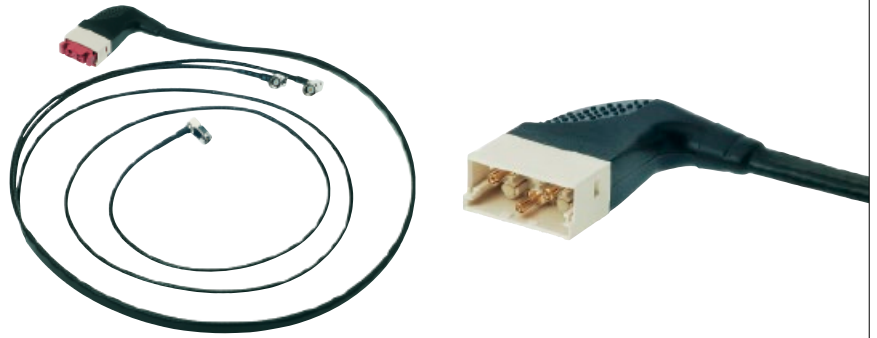
Thanks to various accessories, such as backplane frame, Han® housing insert and press-in cable housing ..., customized connecting requirements can be met.

Remark:

The cable assemblies and accessories shown are part of the overall product range.

Additional, customized parts are available on request.





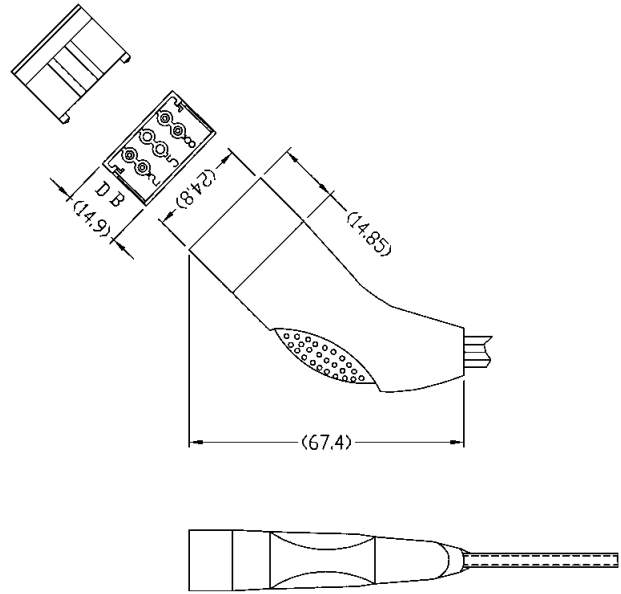
Cable assemblies

Identification	Number of contacts	Part number	Drawing	Dimensions [mm]
----------------	--------------------	-------------	---------	-----------------

Cable assembly for mating with the angled standard module

1-10

on request





Cable assemblies

Identification	Part number	Drawing	Dimensions [mm]
<p>Cable assembly Mini Coax, 6 position female connector (straight) to SMA crimp connector</p> <p>Hood: overmoulded with top entry</p> <p>Wiring: 1:1</p> <p>Length: L = 0.5 m L = 1.5 m L = 2.0 m</p>	<p>33 07 233 0500 109 33 07 233 1500 110 33 07 233 2000 111</p>		
<p>Cable assembly Mini Coax, 6 pole male</p> <p>Cable: Mini Coax cable</p> <p>Hood: overmoulded with top entry</p> <p>Wiring: 1:1</p> <p>Length: L = 0.5 m L = 1.5 m L = 2.0 m</p>	<p>33 07 223 0500 112 33 07 223 1500 113 33 07 223 2000 114</p>		



Cable assemblies

Identification	Number of contacts	Part number	Drawing	Dimensions [mm]
Cable assembly for mating with the angled single-row module	1-3	on request		
Cable assembly with heavy duty hoods/housings	1-10	on request		

Mini Coax
Cables

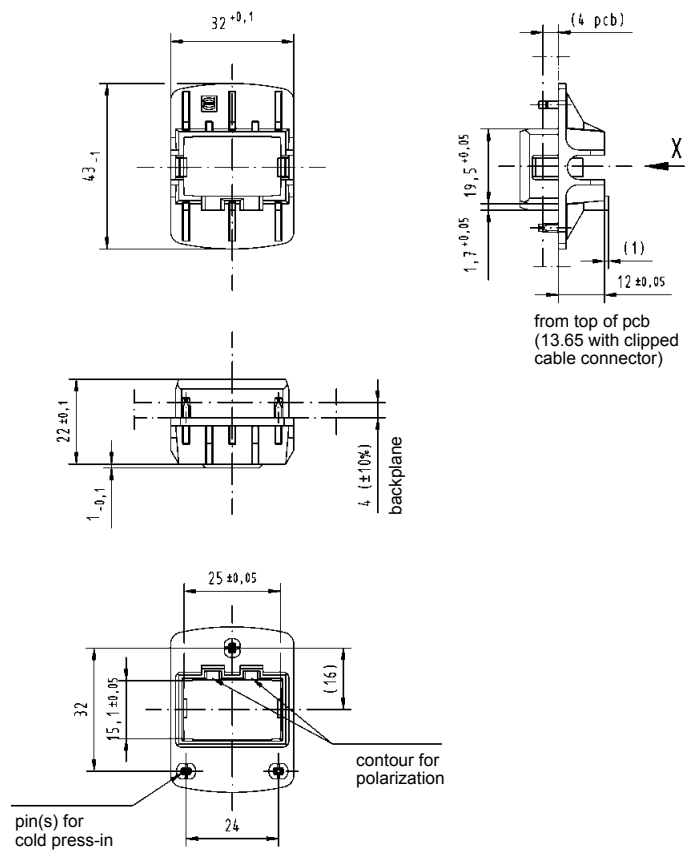


Accessories

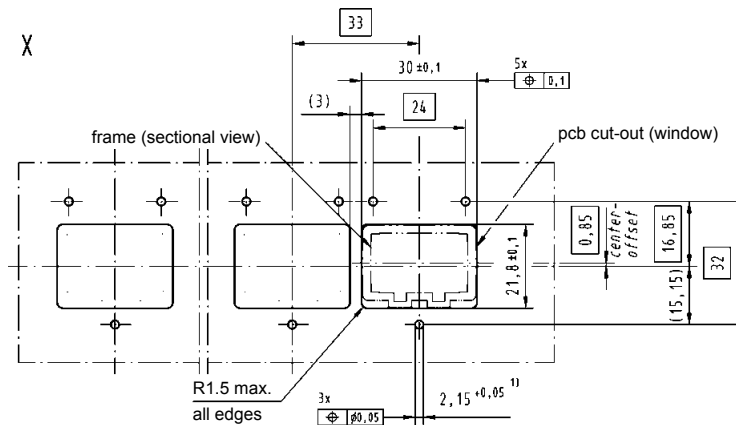
Identification	Part number
----------------	-------------

Backplane frame	07 71 100 0042
-----------------	----------------

Dimensions [mm]



Board drillings



¹⁾ Non-metallized drillings

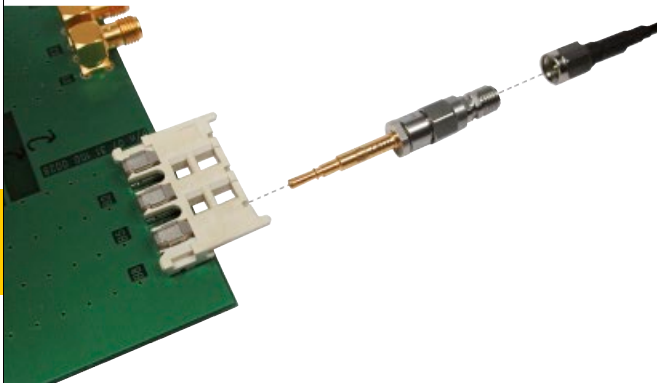


Accessories

Identification	Part number
Test adapter SMA – Mini Coax	
male for straight modules	07 73 000 0394
female for angled modules	07 73 000 0393

General information

The Mini Coax-to-SMA Adapter can be directly connected to measurement instrument cables. This allows the precise RF transmission characterization of module cards, backplanes and cable assemblies.



Features:

- SMA connector directly attached to the Mini Coax
- Impedance deviations between adapters < 1.5 Ω
- Good reproducibility of test results
- Test results between different labs are comparable
- Precise measurements of Mini Coax connector system

Electrical characteristics

Mini Coax test adapter	Impedance values @ 31.5 ps rise time at reference plane (10% - 90%):		Max. impedance deviation [Ω]
	Max. [Ω]	Min. [Ω]	
SMA to male	52.5	47.5	1.5
SMA to female	53.5	48.0 40.5*	1.0

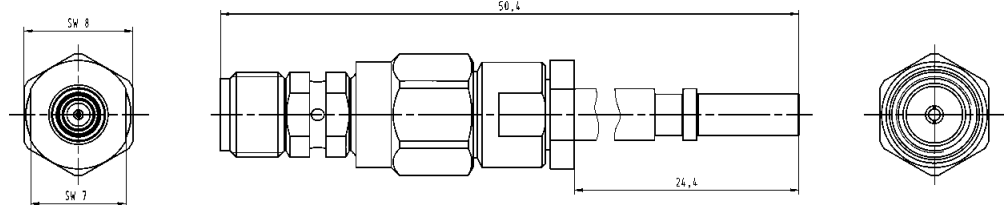
Connector	Electrical length [ps]
Mated SMA to male / female adapter	262.2

Frequency [GHz]	Return loss [dB] mated adapter pairs	Insertion loss [dB] mated adapter pairs
< 1	- 26.9	- 0.17
< 2	- 22.5	- 0.24
< 3	- 19.9	- 0.26
< 4	- 16.4	- 0.34
< 5	- 14.4	- 0.42

*: Impedance drop is due to the female Mini Coax connector design.

Dimensions [mm]

Male test adapter



Female test adapter

