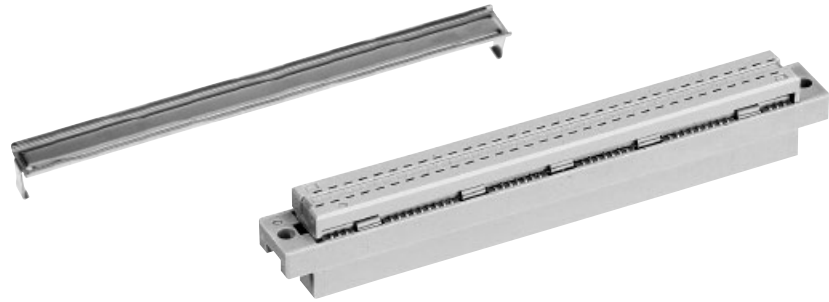


Number of contacts

# 64



Female connectors

DIN Signal up to 2 A

Identification	Number of contacts	Part No.	Drawing	Dimensions in mm
Female connector for insulation displacement	64	Performance level 2 <sup>1)</sup> 09 03 264 6828 09 03 764 6828 <sup>c)</sup>  Performance level 3 <sup>1)</sup> 09 03 264 7828		
Strain relief (metal)		09 03 000 9940		
Panel cut out				Mateable with 3 row male connector type C, no female contacts in the middle row
Flat cable AWG 28/7				<sup>2)</sup> Termination area spacing = 508 mm  <b>Important: always store reels vertically</b>
grey 30.48 m grey 100.00 m colour coded 30.48 m twisted pair <sup>2)</sup> 30.48 m	64 64 64 64	09 18 064 7001 09 18 064 7004 09 18 064 7005 09 18 064 7006	Wire (tinned) Gauge AWG 28/7 Insulation material as per UL style PVC	Cu 0.089 mm <sup>2</sup> PVC
Round flat cable <sup>3)</sup>				<sup>3)</sup> Termination area spacing = 100 mm
with screening 30.48 m without screening 100.00 m	64 64	09 18 064 7007 09 18 064 7010		
with screening 30.48 m without screening 100.00 m	64 64	09 18 064 7008 09 18 064 7011		
Bench press		09 99 000 0114		
Base plate		09 99 000 0150		
Cable cutter		09 99 000 0116		
Spare parts				
Blade		09 99 000 0179		
Cutting plate		09 99 000 0180		