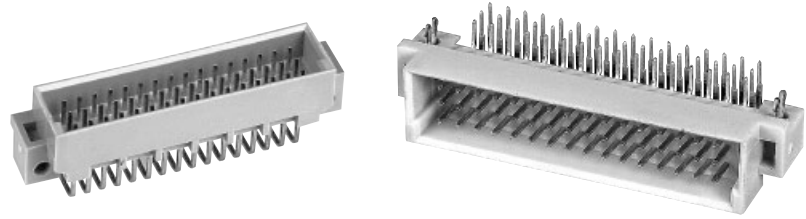


Number of contacts

48, 32, 16



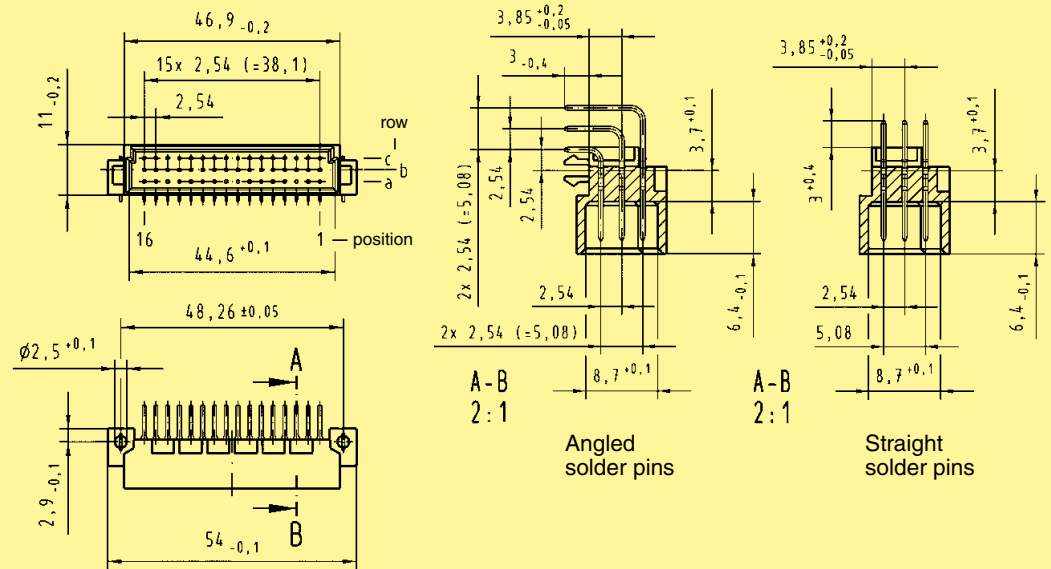
Male connectors

Identification

Drawing

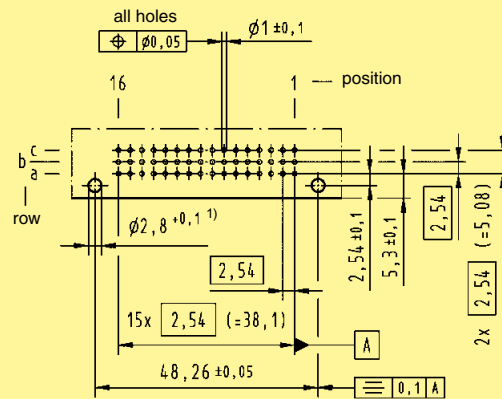
Dimensions in mm

Dimensions

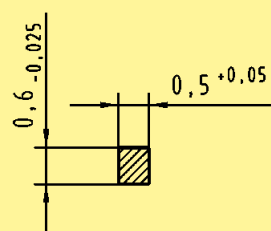


Board drillings

Mounting side



Cross section of solder terminations



Cross area (A) of contacts row a, b, c: A = 0.29 - 0.33 mm²

DIN Signal
up to 2 A

¹⁾ Recommendation for variants with clip: Drillings can be enlarged up to 3.1 mm ϕ to reduce standard mounting force