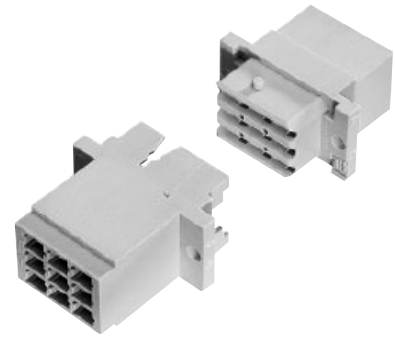


Number of contacts

max. 9



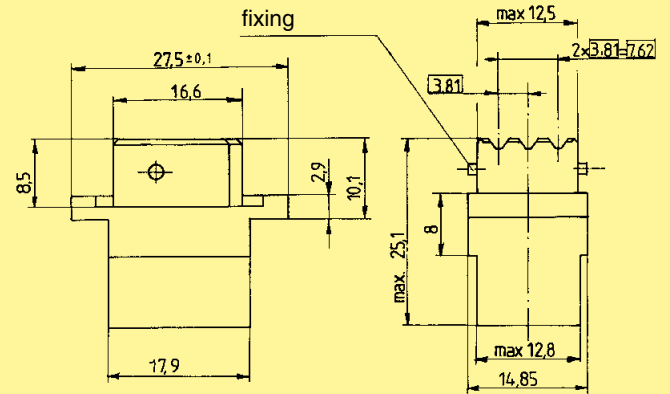
Female and male connectors

Identification	Number of contacts	Part No.	Drawing	Dimensions in mm
----------------	--------------------	----------	---------	------------------

Female connector for crimp contacts
Order contacts separately

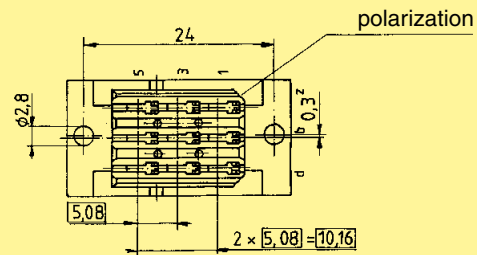
9

09 06 209 3201



Female crimp contacts

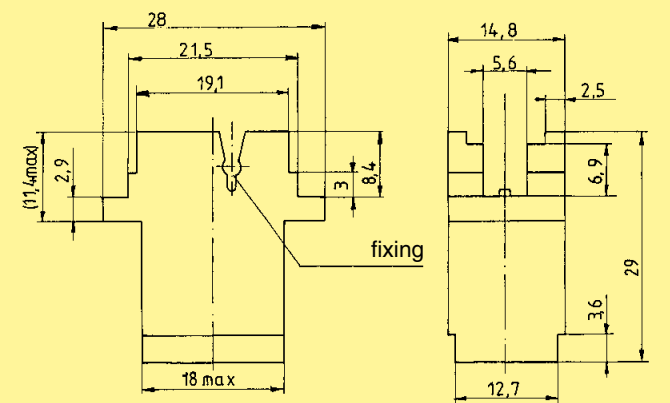
see page 03.31



Male connector for crimp contacts
Order contacts separately

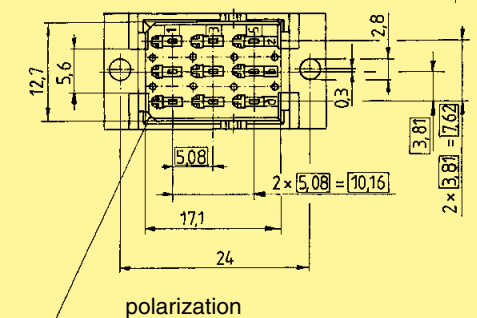
9

09 06 109 3401



Male crimp contacts

see page 03.44



DIN Power up to 6 A