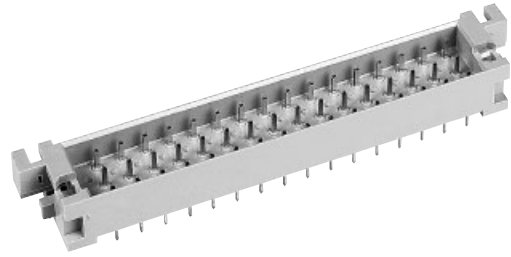


Number of contacts

# 48



Interface connector I

Identification	Number of contacts	Part No.	Drawing	Dimensions in mm
Interface connector I with solder pins 0.6 x 0.6 mm	48	Performance level 2 acc. to IEC 60 603-2  09 05 048 6924 <sup>1)</sup>	<p>                             Drawing showing top and side views of the connector. Dimensions include: 95 (total length), 90±0.1 (length to contact center), 97.5 (length to termination), 13.8 (height), 16.2 (height to top), 6.4 (height to bottom), 85.2 (length to first contact), 88 (length to last contact), 106 (length to termination), 2.7 (width), 2a, 2c, 2e (contact spacing), 5.25 (termination width), 4 (termination offset), 12.2 (termination height), 5.25 (termination offset), 17.5 (termination width).                         </p> <p>                             Contact arrangement View from termination side                         </p>	<p>                             Panel cut out drawing showing dimensions: 85.2 (width), 90±0.1 (width to contact center), 106.5 (width to termination), 10.2 (width to contact center), 5.35 (height), 16.4 (height to top), 5.35 (height to bottom), 17.78 (height to termination), M2.5/#2.8 (mounting hole).                         </p> <p>                             Board drillings Mounting side                         </p> <p>                             Board drilling drawing showing dimensions: 0.3 (hole diameter), 5.08 (hole spacing), 15 x 5.08 = 76.20 (total length), 90±0.1 (length to contact center), 1±0.1 (hole diameter), 2.54 (hole diameter), 5.08 (hole spacing), 2.8±0.1 (hole diameter), 2 x 5.08 = 10.16 (total length), 8.17 (length to termination), 6.2 (termination width), M 2.5 DIN EN ISO 4032 (mounting hole).                         </p>

DIN Power up to 6 A

03  
16

<sup>1)</sup> Railway classification NFF 16-101, Smoke index: F1, Flammability class: I2