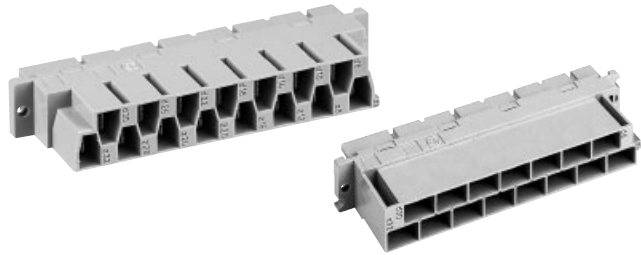


Number of contacts

15



Female connectors

Identification	Number of contacts	Part No.	Drawing	Dimensions in mm
<p>Female connector for faston 6.3 x 2.5<sup>1)</sup></p> <p>Cannot be used in a shell housing</p>	15	<p>Performance level 1 acc. to IEC 60603-2</p> <p>09 06 215 2811</p>	<p>84,9</p> <p>10,1</p> <p>21</p> <p>84</p> <p>14 x 5,08 = 71,12</p> <p>6d 4z</p> <p>5,08</p> <p>90</p> <p>95max.</p> <p>12,4</p> <p>2,9</p> <p>6,3 x 0,8</p> <p>8,17</p> <p>6,5</p> <p>2,8</p> <p>0,3</p> <p>4,8</p> <p>71</p> <p>Contact arrangement View from termination side</p> <p>..X"</p> <p>..X"</p> <p>Z32</p>	
<p>Female connector for faston 6.3 x 2.5<sup>1)</sup></p> <p>May be used in a shell housing</p>	15 15	<p>09 06 215 2871</p> <p>09 06 215 2871 222<sup>1)</sup></p>	<p>84,9</p> <p>10,1</p> <p>21</p> <p>84,5</p> <p>14 x 5,08 = 71,12</p> <p>6d 4z</p> <p>5,08</p> <p>90</p> <p>95max.</p> <p>12,4</p> <p>2,9</p> <p>6,3 x 0,8</p> <p>8,17</p> <p>6,5</p> <p>2,8</p> <p>0,3</p> <p>4,8</p> <p>71</p> <p>Contact arrangement View from termination side</p> <p>..X"</p> <p>..X"</p> <p>D30</p> <p>Z32</p> <p>32 30 28 26 24 22 20 18 16 14 12 10 8 6 4</p>	<p>Shell housing see chapter 20</p>
Panel cut out			<p>M2,5 / 2,8</p> <p>85</p> <p>90 ± 0,1</p> <p>95,5</p> <p>7,5</p> <p>15,5</p> <p>7,5</p> <p>15,2</p>	

DIN Power up to 15 A

<sup>1)</sup> With shroud coding, see chapter 00  
<sup>1)</sup> Railway classification NFF 16-101, Smoke index: F1, Flammability class: I2