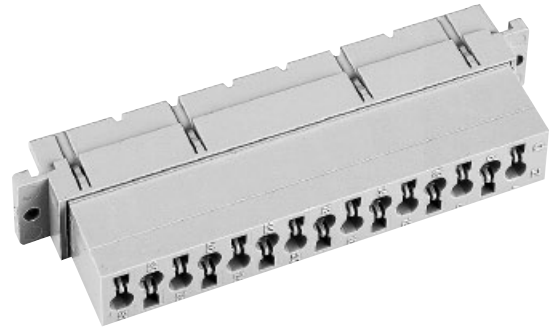


Number of contacts

15



Female connectors

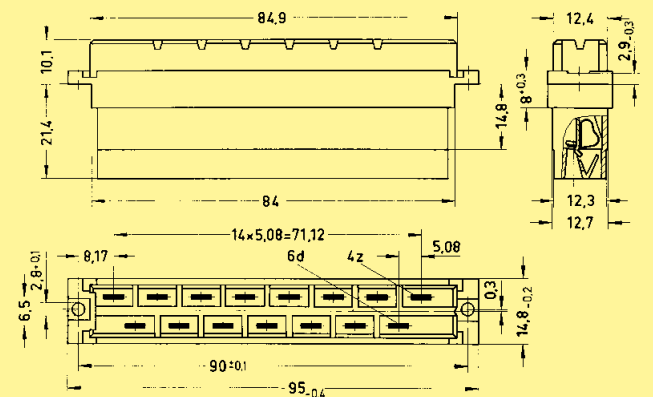
Identification	Number of contacts	Part No.	Drawing	Dimensions in mm
----------------	--------------------	----------	---------	------------------

Female connector with cage clamp  
May be used in a shell housing

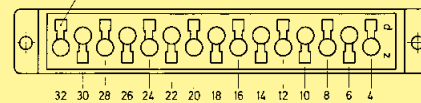
15

Performance level 1 acc. to IEC 60 603-2

09 06 015 2813<sup>1)</sup>

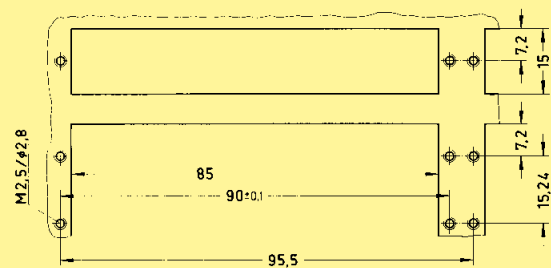


Contact arrangement View from termination side  
Slot for screw driver

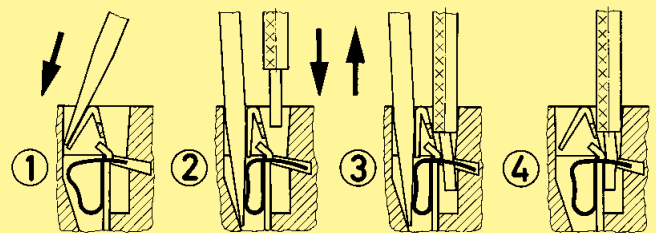


Shell housing see chapter 20

Panel cut out



Termination instructions



Screw driver width: 2.5 x 0.4 mm  
Stripping length: 4 - 10 mm  
Wire gauge: 0.14 - 1.5 mm<sup>2</sup> (AWG 26 - 16)

DIN Power up to 15 A

04 13

<sup>1)</sup> Railway classification NFF 16-101, Smoke index: F1, Flammability class: I2