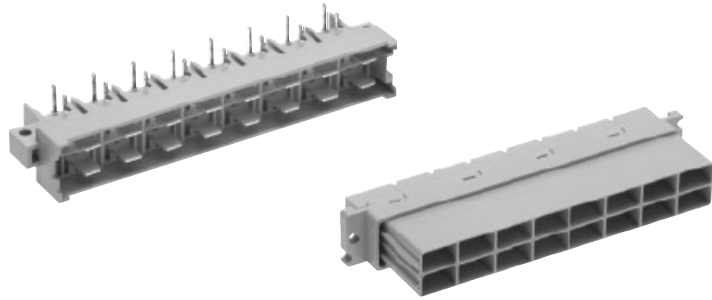


Number of contacts

16



Male connectors

Identification	Number of contacts	Part No.	Drawing	Dimensions in mm
----------------	--------------------	----------	---------	------------------

Male connector with angled solder pins

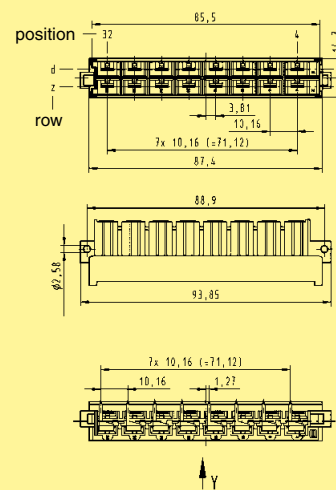
Number of contacts

16

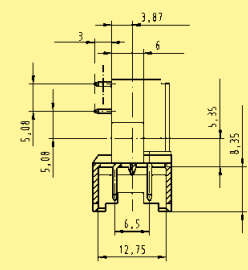
Performance level 1 acc. to IEC 60 603-2

09 06 116 2511

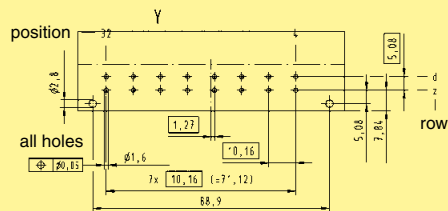
Drawing



Dimensions in mm



Board drillings



Female connector for faston 6.3 x 2.5

16

09 06 216 2411

