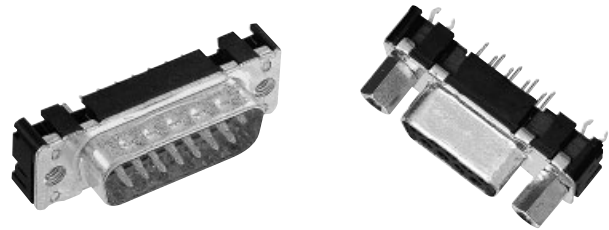


Number of contacts

9–50



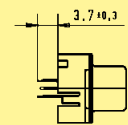
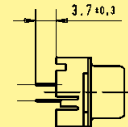
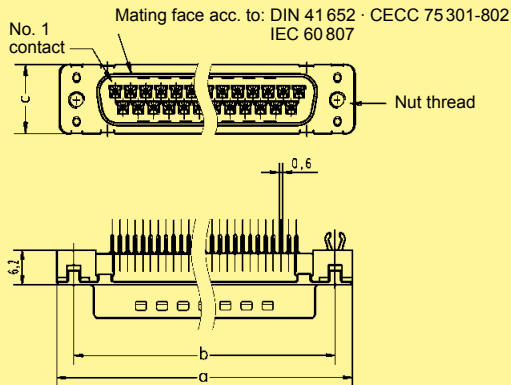
Stamped solder pins, straight with/without grounding board locks

Identification

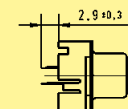
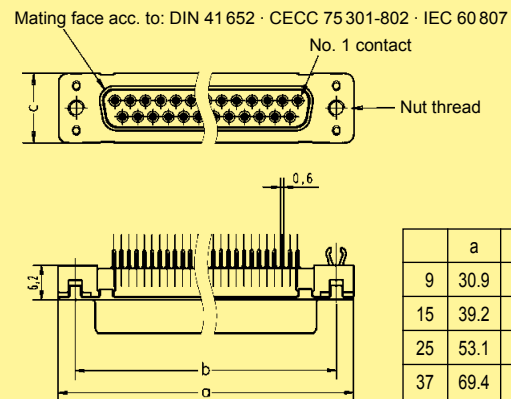
Drawing

Dimensions in mm

Male connector
9 – 37 contacts



Female connector
9 – 37 contacts



	a	b _{±0,1}	c	g	h
9	30.9	25.0	12.5	4 x [2.74] = [10.96]	3 x [2.74] = [8.22]
15	39.2	33.3	12.5	7 x [2.74] = [19.18]	6 x [2.74] = [16.44]
25	53.1	47.0	12.5	12 x [2.76] = [33.12]	11 x [2.76] = [30.36]
37	69.4	63.5	12.5	18 x [2.76] = [49.68]	17 x [2.76] = [46.92]

Board drillings
9 – 37 contacts

