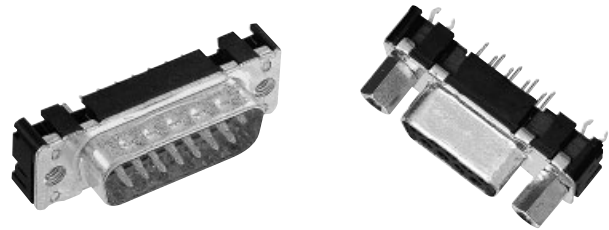


Number of contacts

# 9-37



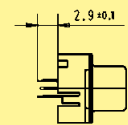
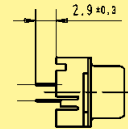
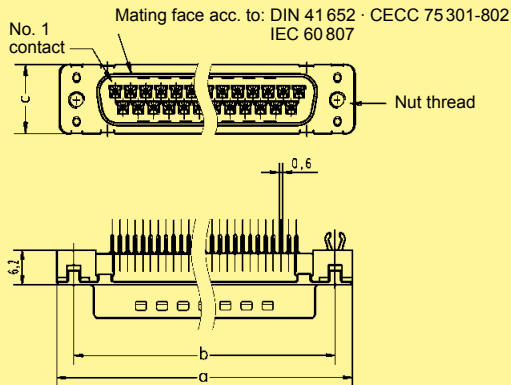
SMC stamped solder pins, straight with/without grounding board locks

Identification

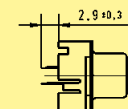
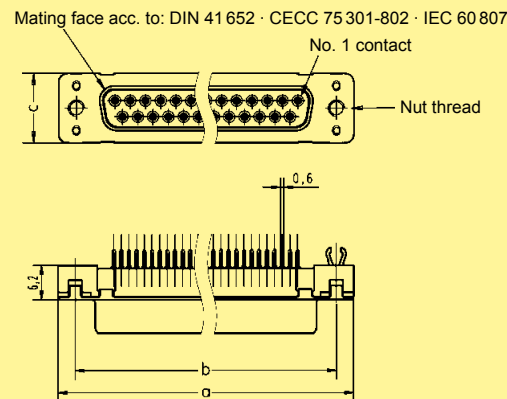
Drawing

Dimensions in mm

Male connector



Female connector



	a	b <sub>±0.1</sub>	c	g		h	
9	30.9	25.0	12.5	4 x	2.74 = 10.96	3 x	2.74 = 8.22
15	39.2	33.3	12.5	7 x	2.74 = 19.18	6 x	2.74 = 16.44
25	53.1	47.0	12.5	12 x	2.76 = 33.12	11 x	2.76 = 30.36
37	69.4	63.5	12.5	18 x	2.76 = 49.68	17 x	2.76 = 46.92

Board drillings

