



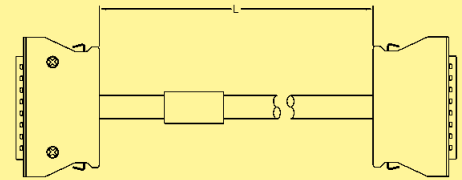
Cable assemblies

Identification	Part No.	Drawing	Dimensions in mm
----------------	----------	---------	------------------

Cable assembly har-mik®
pin and socket, 68 pole

Hood: metal hood with top entry
Cable: 34 twisted pairs, AWG 28, shielded, PVC
Wiring: 1:1

Length: L = 0.5 m	33 60 214 5000 102
L = 1.0 m	33 60 213 1000 103
L = 2.0 m	33 60 213 2000 104
L = 5.0 m	33 60 213 5000 105
L = 10.0 m	33 60 212 1000 106
L = 15.0 m	33 60 212 1500 107
L = 20.0 m	33 60 212 2000 108



Cable assembly har-mik®
bellows, 36 pole

Hood: shielded plastic hood with top entry
Cable: 18 twisted pairs, AWG 28, shielded, PVC
Wiring: 1:1

Length: L = 0.5 m	33 60 214 5000 088
L = 1.0 m	33 60 211 0010 089
L = 2.0 m	33 60 211 0020 090
L = 5.0 m	33 60 211 0050 091
L = 10.0 m	33 60 211 0100 092
L = 15.0 m	33 60 211 0150 093
L = 20.0 m	33 60 211 0200 094

