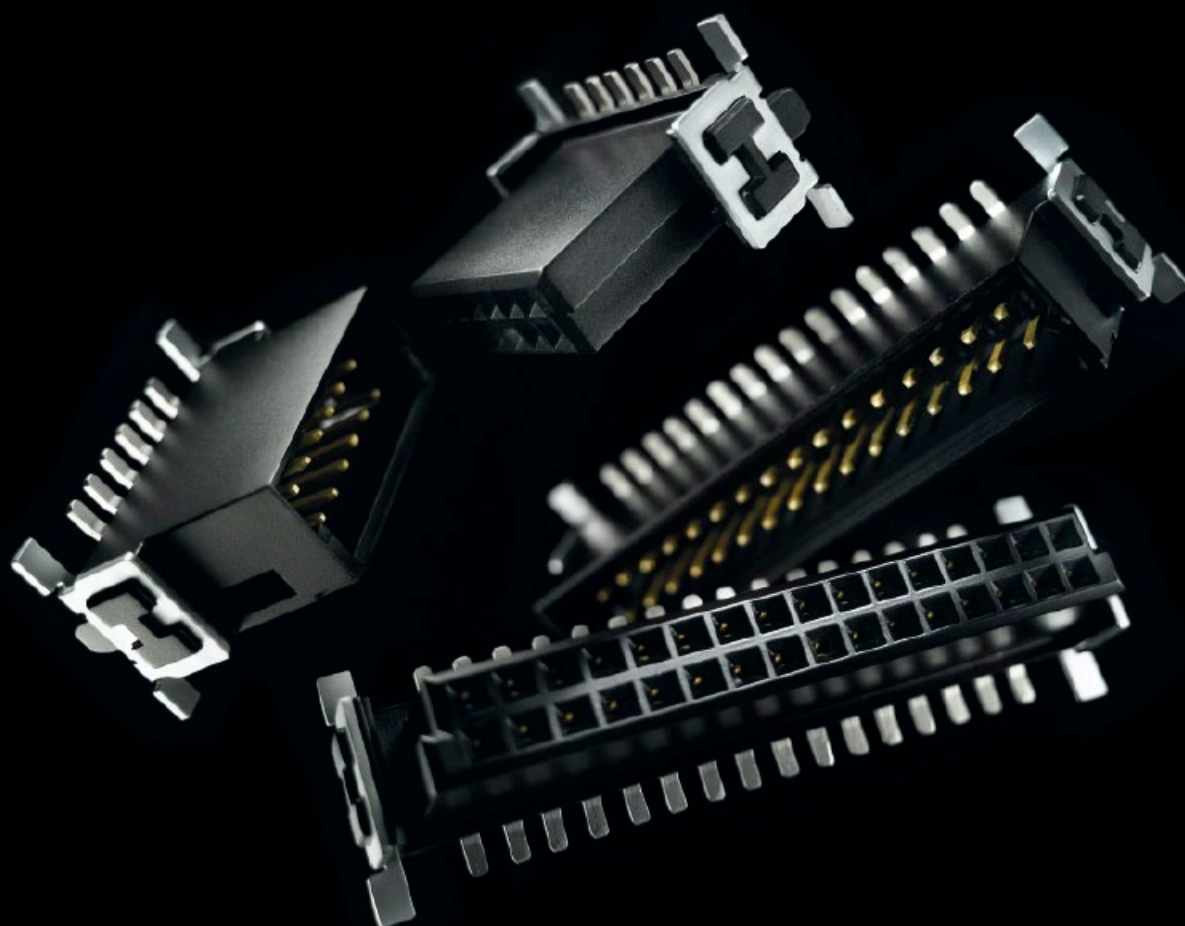




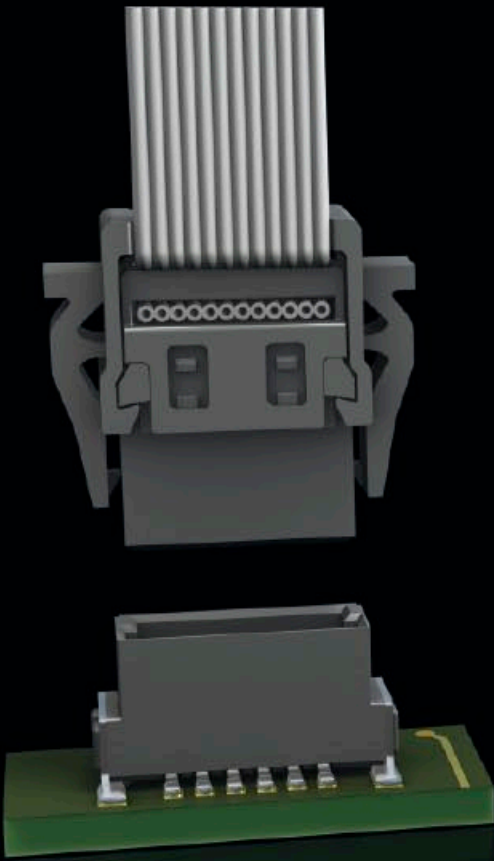
Pushing Performance

# HARTING *har-flex* Info

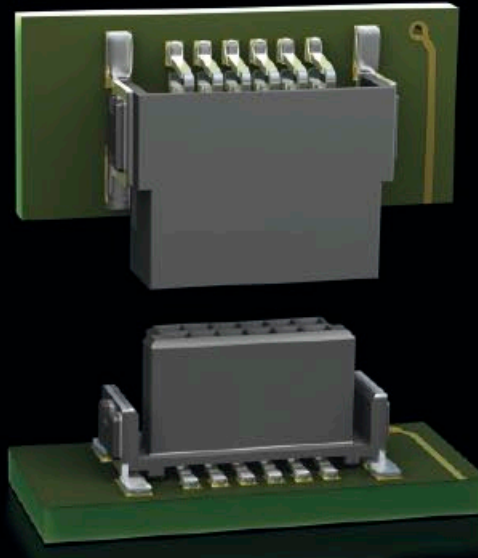


People | Power | Partnership

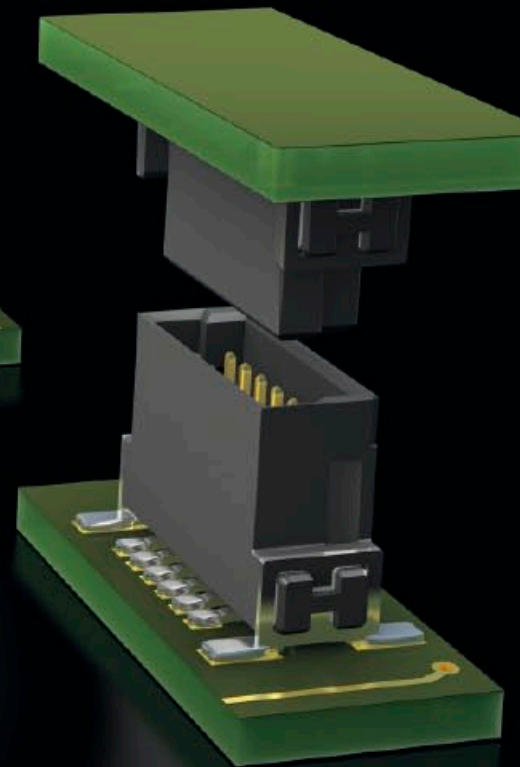
# *har-flex* The flexible connector solution



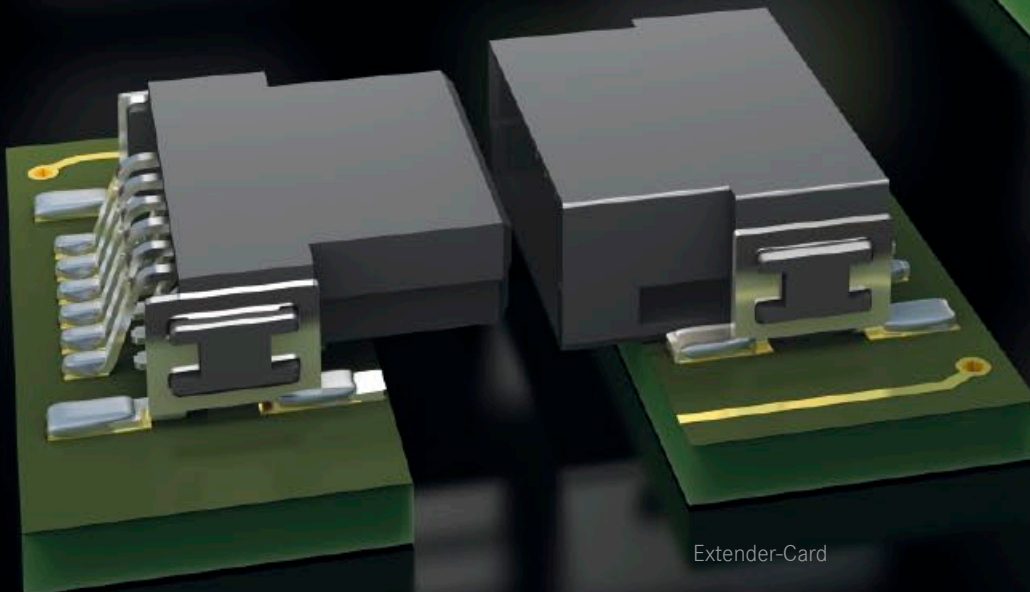
Cable-to-Board



Mother-to-Daughtercard



Mezzanine



Extender-Card

*har-flex*

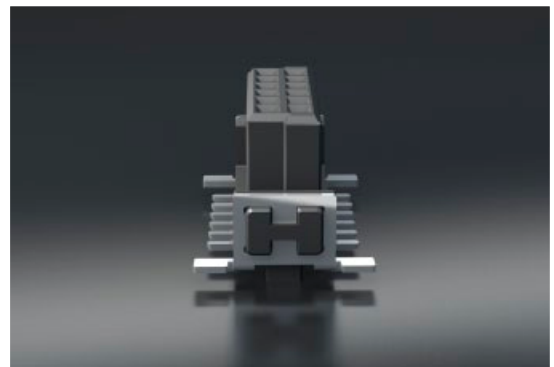
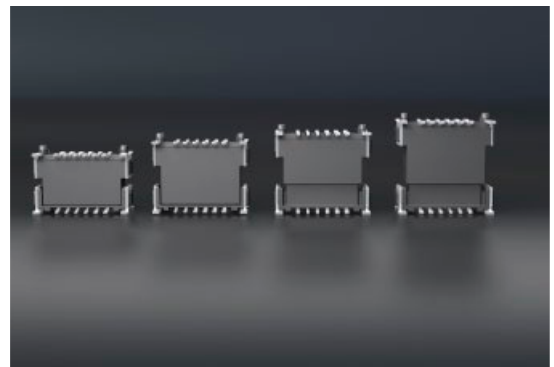
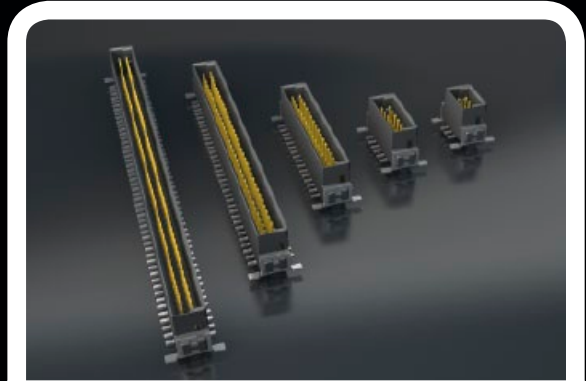
# Product diversity pure

Perfect fitting pincount  
between 6 and 100  
in even numbered positions  
Optimized utilization  
of PCB real estate

Flexible board-  
to-board distances  
Four stacking heights

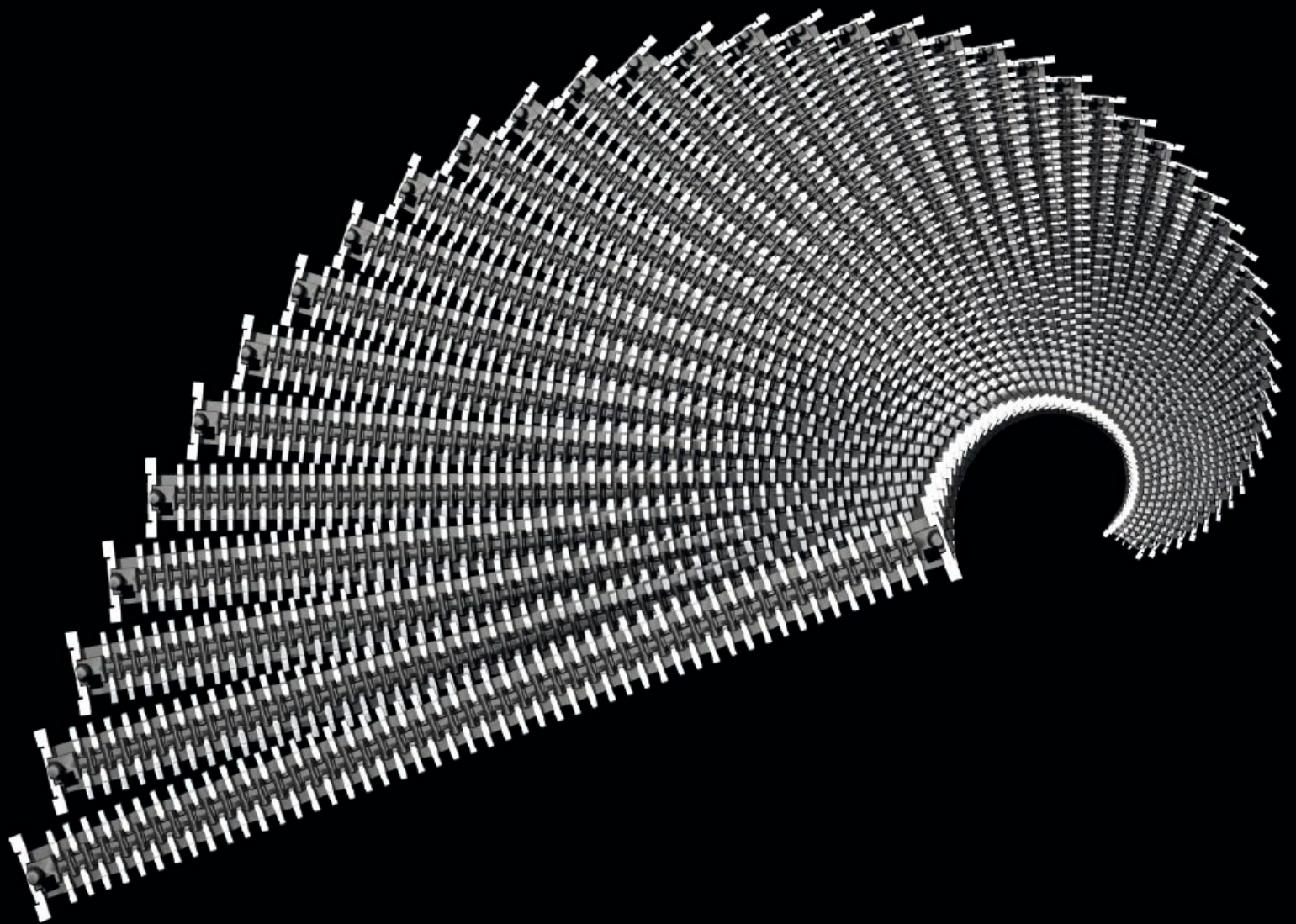
Robust design  
High density contact spacing  
Secure fixation

Suitable for reflow soldering  
Pick & Place optimized  
Continuously tested  
coplanarity

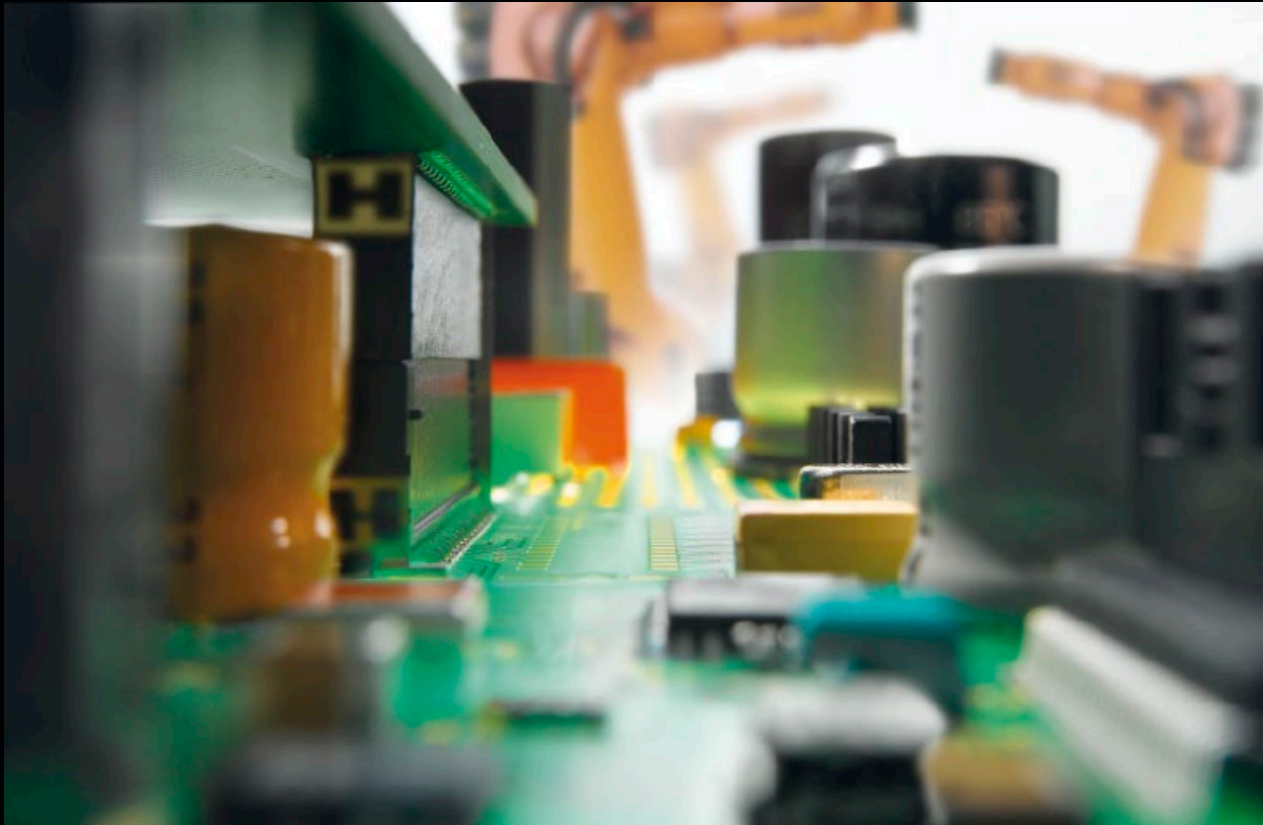


*har-flex*

**You have the footprint –  
We have the matching  
connector**



*har-flex*  
**Bright prospects  
for your PCB**





**Pushing Performance**

[www.HARTING.com](http://www.HARTING.com)